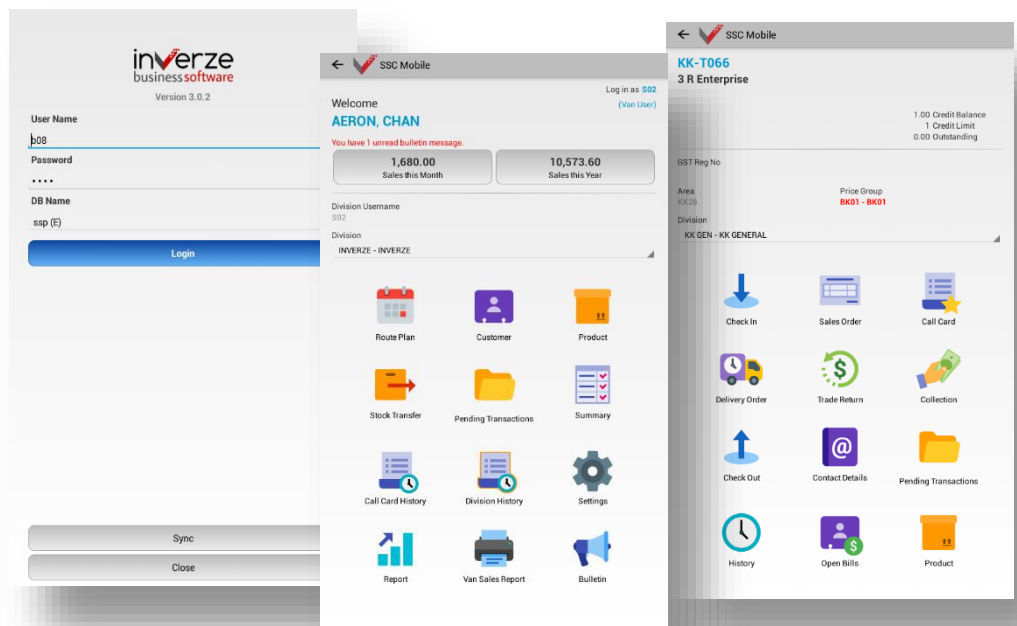


# New Login Screen and Customer Screen

## New Design

Whole new design  
and improved  
arrangement of all  
buttons at Login  
Screen and Customer  
Screen



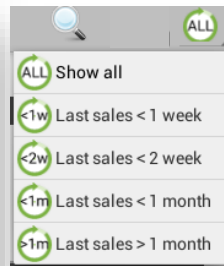
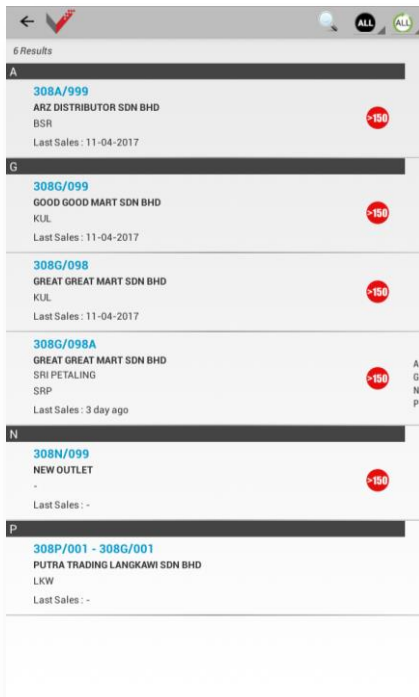
## Sales Dashboard



## Know your Sales Performance

Monthly sales and year-to-date sales in graph.  
And also, view sales performance by Division or by Item Category or by Customer Category.

# Improved Filter to Search Customer



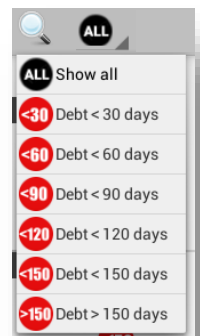
## Filter by Last Sales Date

Show customer by last sales date in a week, in 2 weeks, in a month, or more than a month.

## Filter by Aging Outstanding Days

Easily to find customers with credit issue \*

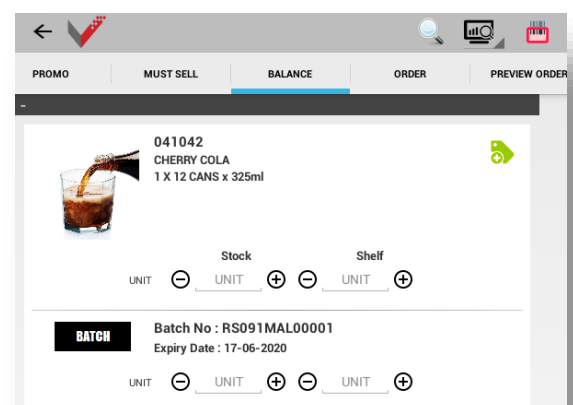
\* Only for the use of Sync Aging module with accounting system into SSC.



# Check Outlet Stock Balance with Batch Number and Expiry Date

## Simply Add Different Batch No & Expiry

Check your customer's stock balance with different batch number and expiry date



# Product Catalogue

## Use Call Card as Product Catalogue

New product catalogue feature to let you showcase your products to customers. Enter customer's balance and make order at the same time while viewing the catalogue.

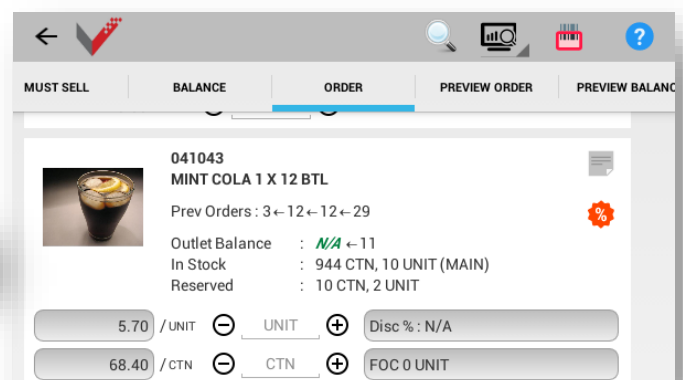


# Search Item using Scan Barcode

## Scan Barcode

Avoid chosen the wrong Item/Product by using scan barcode to search item \*

\*Restrict to tablet model enabled with auto-focus camera only.



# Printing with Bluetooth Thermal Printer

## Easy Printing with smaller printer

Van Sales can print Tax Invoice/Temporary Receipt with thermal printer which is smaller in size. Or if you are general salesman, you may use this feature to print Temporary Receipt to replace the handwritten temporary receipt booklet. \*

\*Applicable to Bluetooth enabled tablet only.



# Bilingual Version

## Support with Chinese Language

Chinese-speaking user can switch to Chinese version and login to see the whole interface translated to Chinese.

